



Australian Institute of Landscape Architects

The Hon. Rob Stokes, MP
Minister for Planning
52 Martin Place
SYDNEY NSW 2000
office@stokes.minister.nsw.gov.au

A MASTER PLAN FOR WESTERN SYDNEY

Dear Minister

I write on behalf of the members of the NSW chapter of the AILA.

The Australian Institute of Landscape Architects (AILA) is the growing national advocacy body representing 2500 active and engaged landscape architects, and promoting their crucial role in shaping the world around us. AILA provides its members, based in urban and rural Australia, and overseas, with a wealth of continuing professional development and support services, and positions landscape architects at the forefront of developing the policies that shape our towns, cities and regions. AILA champions quality design for public open spaces, stronger communities and greater environmental stewardship. Alongside government and allied professions, AILA works to improve the design, planning and management of the natural and built environment. www.aila.org.au.

The eastern half of Sydney has evolved over more than 200 years within a landscape of outstanding natural beauty to incorporate a unique network of open spaces, cultural attractions and iconic landmarks of world renown. The western half of Sydney, which incorporates the North West and South West Growth Centres and extends approximately 10 km from east to west, will undergo comparable urban growth but within a matter of decades.

The speed at which this growth will take place provides great opportunities to incorporate the knowledge about good urban planning and design to create places that contribute in a fundamental way to the health and well being of communities while maintaining healthy natural environments. However, to achieve this outcome will require a well conceived inclusive process that seeks input from a diverse range of perspectives and expertise.

The western half of Sydney sits within a landscape that reflects a distinctive combination of landform, vegetation, rivers and creeks together with cultural values associated with both indigenous and non-indigenous communities. The woodland landscape character of the Cumberland Plain is the endemic vegetation which, although all but depleted, has an iconic and beautiful quality. The Nepean River and associated Penrith Lakes clearly define the western boundary with the Blue Mountains forming a unique scenic backdrop. The Western Sydney Parklands with its balance of recreational and ecological values forms the eastern boundary.

However, there is very little vision as to how the western half of Sydney will become a great, liveable and attractive city in which the distinctive landscape character forms an overarching framework.

AUSTRALIAN INSTITUTE OF LANDSCAPE ARCHITECTS

ACN No. 008 531 851 ABN 84 008 531 851

(NSW Office) email: nsw@aila.org.au

Level 5, 68-72 Wentworth Avenue, Surry Hills NSW 2010

Telephone: (02) 6248 9970 Mobile: 0424 184 469



Australian Institute of Landscape Architects

Canberra for example, with around 500,000 people has a master plan, a designed approach which is progressively developing into an attractive and liveable city with open space, landmarks and a sense of civic pride. The western half of Sydney incorporating the Growth Centres needs a similar master plan to provide a vision of a city in which a connected network of public open spaces, cultural values and natural systems are carefully integrated.

The time is ready for this plan. We now know much of what is needed: Badgery's Creek Airport, the road and rail network, employment lands, a corridor for an outer Sydney motorway, freight terminals, precinct plans for residential release areas and an extensive flood zone. However, these elements individually do not make a city nor establishes a desirable character in which people want to live.

The NSW Chapter of the Australian Institute of Landscape Architects recommends that the NSW Government commences a master plan process for outer Western Sydney. This would provide design direction for a liveable, sustainable and productive city in the Cumberland Plain landscape. A city that in time will rival and in some ways achieve better urban quality and sustainability than eastern Sydney, with high quality open space; an all pervading urban forest providing cooling, character and beauty; and interconnected communities, cultural landmarks and places that its residents can be proud of. Such a master plan has its precedent in Walter Burleigh Griffin's designs for Canberra, now proving so effective and valuable.

A master plan supporting the NSW Government Plan for Growing Sydney, will enable all the infrastructure commitments to be linked, integrated and incorporate the Sydney Green Grid in more detail to achieve an outcome greater than the sum of the parts. Its implementation will be achieved through the projects lead by government and developers. Its cost will be far outweighed by the benefits of having agreement, consistency and clarity for all sectors and by the wider economic benefits of the creation of a beautiful place to live and work that makes a major contribution to community health and well being.

AILA members are ready to help in this master plan, provide design direction and give life and realism to the Government's aims.

We would be happy to meet to discuss this matter further and how landscape architects can assist in creating a great place to live; with communities that are strong, healthy and well connected; ensuring Sydney is a sustainable and resilient city that protects the natural environment and has a balanced approach to the use of land and resources. Our Chapter Manager, Catherine Scheen, would be happy to make arrangements with your staff. (catherine.scheen@aila.org.au or 0424 184 469)

Finally I attach the list of recent AILA NSW award winners for your information.

Gareth Collins



Australian Institute
of Landscape Architects

NSW Chapter President

Australian Institute of Landscape Architects

Gareth.collins@aila.org.au

NEW SOUTH WALES 2015 AWARD WINNERS

Sydney's highly anticipated Barangaroo Reserve and a world-class plan for Parramatta City River, are two of 20 landscape architecture projects and professionals recognised for outstanding innovation and design at this year's Australian Institute of Landscape Architecture (AILA) New South Wales Awards.

McGregor Coxall, in partnership with Parramatta City Council, was awarded the prestigious New South Wales 2015 Medal for Landscape Architecture, for their bold vision to revitalise the city foreshore of the Parramatta City River into a vibrant public space. The compelling and innovative strategy reactivates the river corridor, connecting it to the city centre through open spaces, access ways and structured quarters.

The recently revealed Barangaroo Reserve received its first official accolade, with Peter Walker and Partners, Johnson Pilton Walker, Stuart Pittendrigh, Ron Powell and Tract Consultants given the NSW President's Choice Award for their collaborative and sustainable approach to the new oasis. Honouring the natural landscape and materials, including Sydney's famous sandstone, the team have transformed the space to immerse visitors in the heart of Sydney harbour with a visual, emotional and historic connection to the reserves and headlands.

Other standout projects awarded include ASPECT Studios for their Alumni Green enlivening Sydney's University of Technology and HASSELL for their redevelopment of both Darling Harbour and Sydney's light rail. Sydney's surrounding suburbs and regions are also home to award-winning projects, including the Sutherland Shire Council Design Services' *Cronulla Esplanade and Seawall upgrade*, and the world-class Wylde Mountain Bike Trail – a collaborative project between GroupGSA and Western Sydney Parklands Trust.

The awards also recognised the profession's future leaders, with Alexander Georgouras from Spackman Mossop Micheals Studio receiving the state's Graduate accolade, and Allison Sainty and Brinlee Pickering receiving the Future Leaders Student Awards.

The full list of project award recipients for the 2015 AILA NSW Landscape Architecture Awards are as follows:



Australian Institute
of Landscape Architects



AILA NSW 2015 Medal for Landscape Architecture

McGregor Coxall in partnership with Parramatta City Council for The Parramatta City River Strategy



Award for NSW President's Choice in Landscape Architecture

Peter Walker and Partners, Johnson Pilton Walker, Stuart Pittendrigh, Ron Powell and Tract Consultants for the work on Sydney's Barangaroo Reserve



Australian Institute
of Landscape Architects



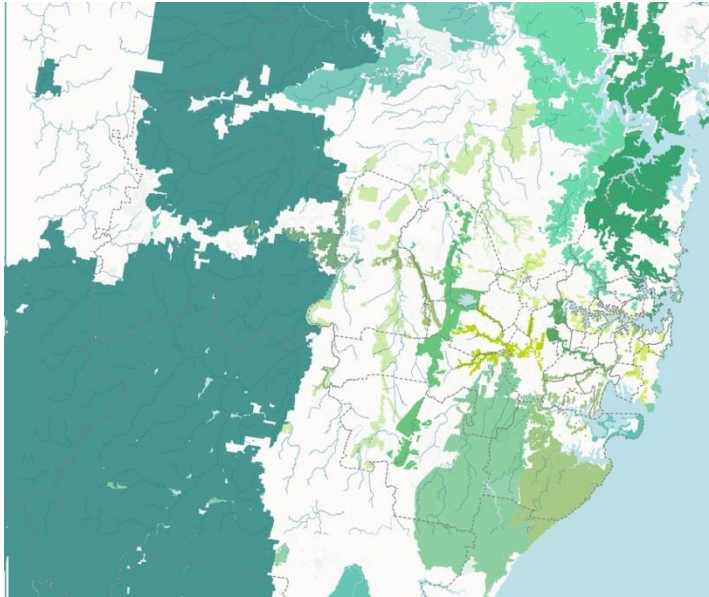
Award for NSW Public Practice in Landscape Architecture

Sutherland Shire Council – Design Services for Where the Shire meets the Sea; the Cronulla Esplanade and Seawall upgrade



Award for Residential Designed Landscapes

Stuart Noble Associates for Quay Apartments



Award for Excellence in Planning in Landscape Architecture

NSW Government Architects Office for The Sydney Green Grid

**RHODES PENINSULA
Open Space Master Plan
+ Plan of Management**

Rhodes Peninsula is a dynamic urban centre with its distinctive form and context within the City of Canada Bay. Rapid urban development and density along its central corridor have led to a loss of amenity, the loss of open space and a fragmented network of public open spaces. An integrated network and ongoing management plan is required to address these issues, to enhance the public domain and to provide a framework for the future development of the peninsula.

The Rhodes Peninsula Open Space Plan of Management, which will also be prepared by Corkery Consulting in parallel with the Master Plan, provides the strategic framework for coordinated planning and management of all public open spaces throughout Rhodes Peninsula. The Plan of Management will not a program of action and identifies priorities for implementation.

NOV 2011 - MAR 2012	MAR 2012 - SEP 2014	OCT 2014 - JUN 2015
STAGE 1 DATA COLLECTION + REVIEW OF CURRENT POSITION	STAGE 2 PUBLIC ENGAGEMENTS + DRAFTING	STAGE 3 FINAL ENDORSEMENT + FINAL MASTER PLAN

Award for Planning in Landscape Architecture

Corkery Consulting for Rhodes Peninsula Open Space Master Plan & Plan of Management



Australian Institute
of Landscape Architects



Award for Urban Design in Landscape Architecture

HASSELL for the Sydney Light Rail



Award for Urban Design in Landscape Architecture

KI Studio for Nepean River Green Bridge, Penrith-Concept Design Vision



Award for Urban Design in Landscape Architecture

HASSELL for the Darling Harbour Precinct

Glenworth Hospital from the north bank of the Theatre Bay, circa 1792. The great setting contemporaneous to which Phillip attended to school and boarders, is believed to have inspired his broadscale approach to the landscape.

Arthur Phillip Esq. Captain General and Commander in Chief & Gov. of New South Wales, 1788. By Francis Whitley, W. Stirling and John Stockdale.

What was Phillip's broadscale approach to the landscape?

Phillip's landscape responses are recorded as summarised reports to government. Only by analysing his & other eye witness accounts; the maps and charts by his teams; chronologically, and as a collection; and through a landscape planning and analysis lens, can Phillip's true contribution be understood.

Bradley's survey of the upper Parramatta River, 1788, showing the new settlement. The assessment team had initially thought this area to Phillip's attention.

"Method of Climbing Trees" Port Jackson painter, 1788-1792. The newcomers perceived the fire-risk managed Aboriginal cultural techniques as a plank. Its large boom having deep soil.

RESEARCH APPROACH: a mixed method of enquiry into:

1. Mapping from 1788-1792
2. Archival research
3. Field Observations
4. Natural science information
5. Recent relevant works

SOME KEY DATA PRIMARY SOURCES:

- Officer of Marines, Walkin Trench: journal
- First-Lieut. William Bradley: journal, watercolours, plan and surveys.
- Captain John Hunter: surveys.

Phillip's first Sydney Cove plan, July 1788. An island and square, aligned to the topography (arrow) by Governor's road impact, from Port Jackson.

Phillip's contribution to Sydney, and its region, through a new lens is important because later governors' particularly Macquarie and his architect Goswami are largely credited with being its place makers through their tangible legacy of public works.

In truth they built upon the formulation of deeper patterns of thinking by Phillip as evidenced in his orchestration of new settlements at Sydney, Norfolk Island, Parramatta and Tongueable. His decisions were informed by examining the country; extensive site visits overland and / or excursions by boat. His assessment teams surveyed and sounded local and regional waterways; his landscape observations analysed as broadscale conceptualizations.

"A New South Wales Native smoking fish by moonlight" Port Jackson painter, 1788-1792.

The Sydney Basin Shougun, nestled into green, is central on Sydney identified as a hot site.

William Bradley sketch 1788. The landscape is labelled, clockwise, on the survey as 'wenty and seven', 'sandy and swampy', 'sandy and barren country'. On arrival at Botany Bay, assessment teams examined it's landscape over many days in detail.

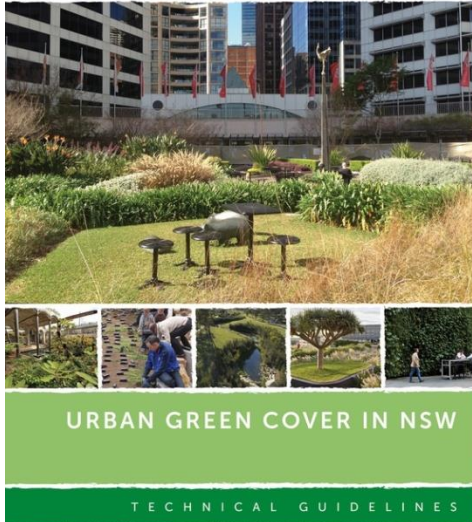
Planning Report - PLAN 9018 Thro' the eye of the Governor 1788-1792. THE LANDSCAPE PLANNING LEGACY OF GOVERNOR ARTHUR PHILLIP

Student Name: Christine Hay Supervisor: Dr. Cameron Logan
 Student Number: 42018089 Unit Coordinate: Assoc Prof. Nicole Gurrán

THE UNIVERSITY OF SYDNEY
FACULTY OF ARCHITECTURE, DESIGN AND PLANNING

Award for Research and Communication in Landscape Architecture

Christine Hay for The Governor's Gift, Phillip's Landscape Vision Research Paper



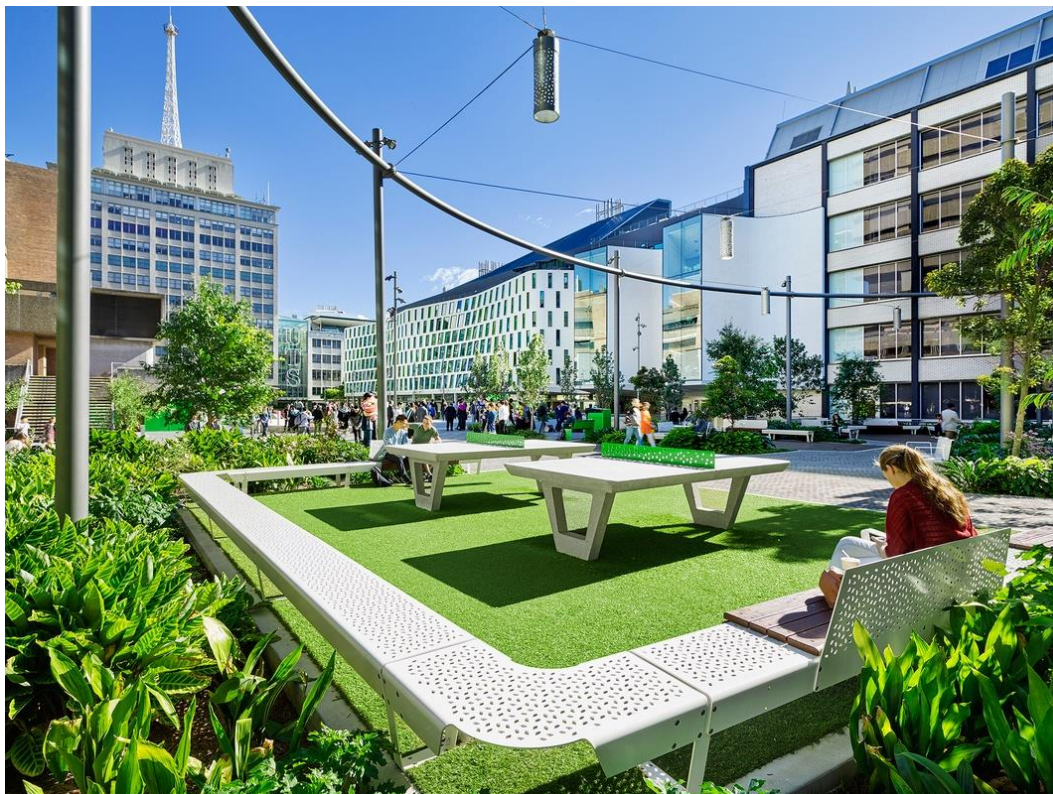
CONTENTS

GLOSSARY	VI
1. INTRODUCTION	1
1.1 About the green cover initiative	2
1.2 What is urban green cover?	3
1.3 Protecting health, livability and environment through urban green cover	4
1.4 Purpose of NSW Urban Green Cover Technical Guidelines	6
2. GREEN ROOFS AND COOL ROOFS	7
2.1 Green roofs	8
2.2 Green roof components	9
2.3 Cool roofs	13
2.4 Cool roof components	13
2.5 Typical construction	14
2.6 Essential considerations	16
3. GREEN WALLS	19
3.1 Green walls	20
3.2 Green wall components	21
3.2 Typical construction	24
3.3 Essential considerations	29
4. GREEN PAVEMENTS, STREETS AND CAR PARKS	31
4.1 Green pavements	32
4.2 Green pavement components	33
4.3 Typical construction	35
4.4 Essential considerations	37
4.5 Green streets and car parks	38
4.6 Components	39
4.7 Typical construction	42
4.8 Essential considerations	47
5. GREEN OPEN SPACES	49
5.1 Green open spaces	50
5.2 Components	51
5.3 Typical construction	52
5.4 Essential considerations	53
6. RELEVANT COMPLEMENTARY STANDARDS AND DOCUMENTATION	55
6.1 Building standards	55
6.2 Crime Prevention through Environmental Design	57
6.3 Disability access	57
6.4 Fire safety	57
7. REFERENCES AND FURTHER INFORMATION	58

Technical guidelines for urban green cover in NSW

Award for Research and Communication in Landscape Architecture

NSW Government Architects Office Landscape and Urban Design Group for Urban Green Cover in NSW Technical Guidelines





Australian Institute
of Landscape Architects

Award for Design Excellence in Landscape Architecture

ASPECT Studios for the UTS Alumni Green



Award for Design in Landscape Architecture

GroupGSA in collaboration with Western Sydney Parklands Trust for the Wylde Mountain Bike Trail



Award for Design in Landscape Architecture

KI Studio for the Glenfield to Leppington-Integrated Art and Heritage Strategy



Australian Institute
of Landscape Architects

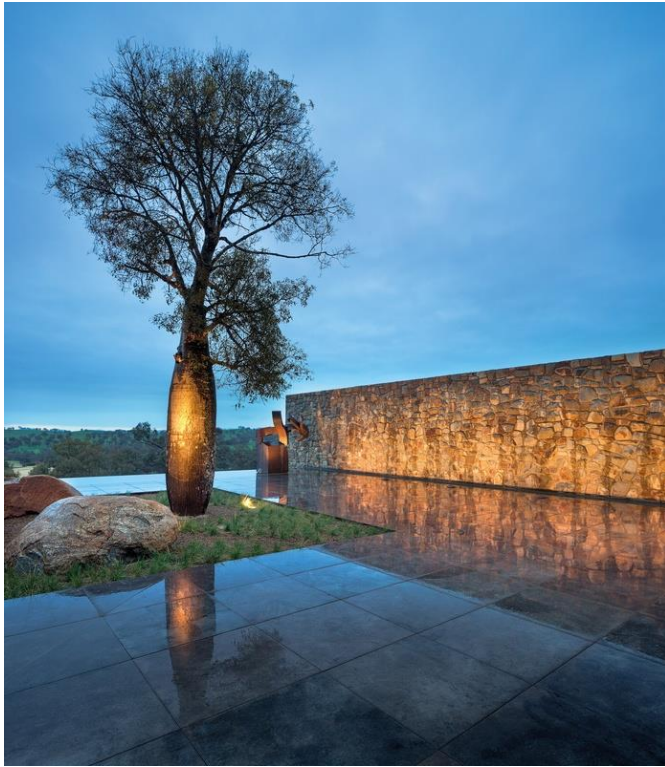


Awards for Design in Landscape Architecture

Stuart Noble Associates for Edmondson Park



Australian Institute
of Landscape Architects



Award for Design in Landscape Architecture

Tract Consultants for Garangula Gallery



Award for Design in Landscape Architecture

Jeppe Aagaard Andersen and Turf Design Studio for Chippendale Green